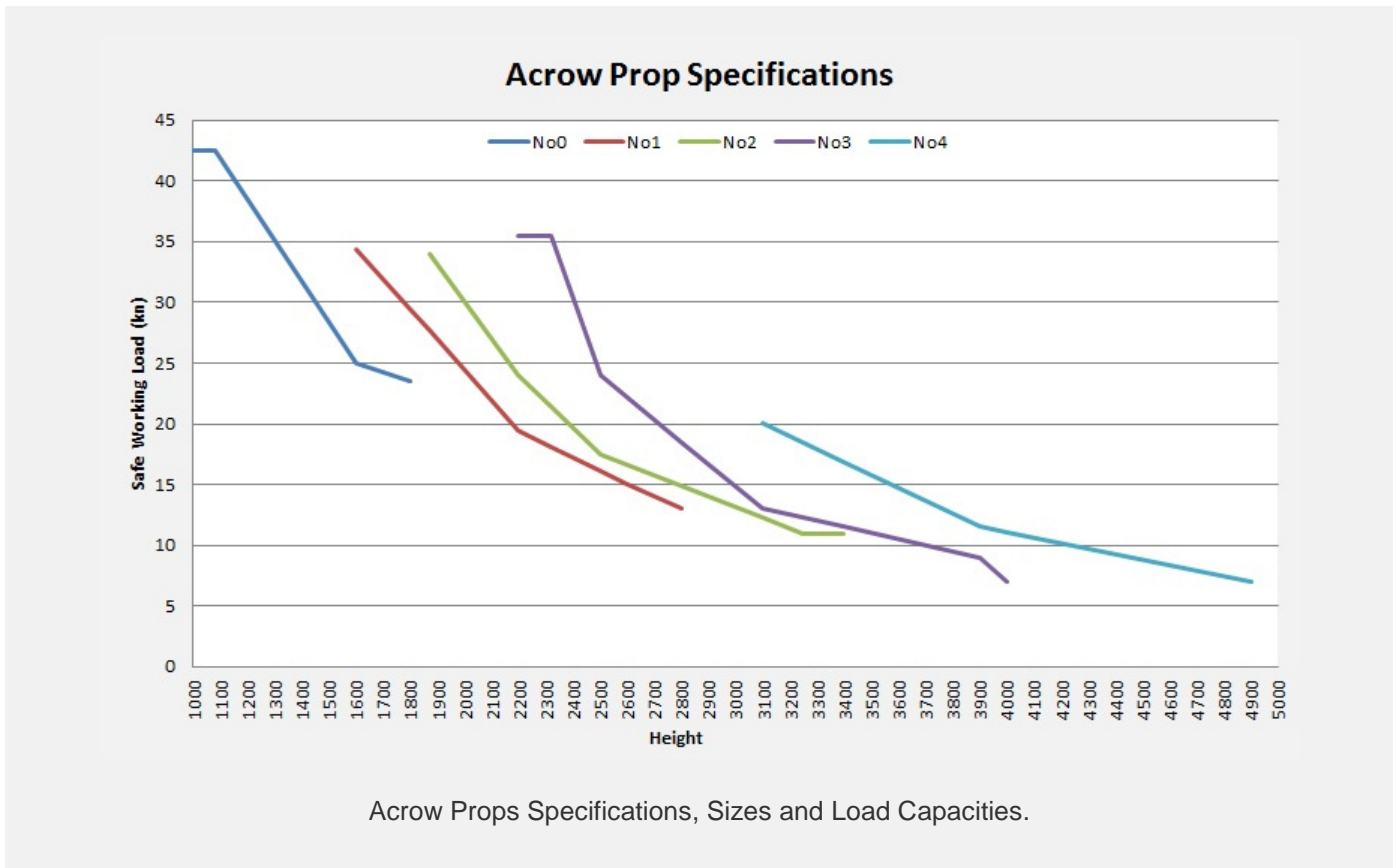


# Acrow Prop Specifications

**Acrow Props** or **Acro Props** are used throughout the construction industry and are available in 5 different sizes. To help you select the right acrow prop for your project, you need to consider the height that you need the prop to reach and the load or weight that it needs to support.

## Standard Acrow Prop Sizes and Load Capacity



Acrow Props Specifications, Sizes and Load Capacities.

## The Acrow Prop Range

### The No.4 Acrow Prop

- Fully adjustable from 3100 mm up to 4900 mm.
- Acro Props have a Safe Working Load of 20 KN at 3100 mm through to 7 KN at its maximum height of 4900 mm.
- Weight 30 kg

### The No.3 Acrow Prop

- Fully adjustable from 2170 mm up to 3975 mm.
- Acro Props have a Safe Working Load of 35 KN at 2170 mm through to 7 KN at its maximum height of 3975 mm.
- Weight 22.6 kg

### The No.2 Acro Prop

- Fully adjustable from 1900 mm up to 3400 mm.
- Acro Props have a Safe Working Load of 39 KN at 1900 mm through to 11 KN at its maximum height of 3400 mm.
- Weight 20.0 kg

### The No.1 Acrow Prop

- Fully adjustable from 1600 mm up to 2800 mm.
- Acro Props have a Safe Working Load of 34 KN at 1600 mm through to 12 KN at its maximum height of 2800 mm.
- Weight 17.3 kg

### No.0 Acro Props

- Fully adjustable from 1005 mm up to 1830 mm.
- Acro Props have a Safe Working Load of 42 KN at 1050 mm through to 22 KN at its maximum height of 1830 mm.
- Weight 13 kg

## Components in Detail

### Acrow Prop Head and Base Plate:

- 150mm x 150mm steel plates with drilled holes for securing to timber beams or facilitating the use of accessories.

### Acrow Prop Inner-Tube:

- 48.3mm OD tube with holes at 152.5mm centres.  
Tube diameter enables standard scaffold tube and couplers to be used for bracing purposes.

### Acrow Prop Outer-Tube:

- 60.3mm OD tube which accommodates the thread section and slot for fine height adjustment. Reduction couplers enable standard scaffold tube to be connected to the ACROW PROP outer-tube for bracing purposes.

### Thread:

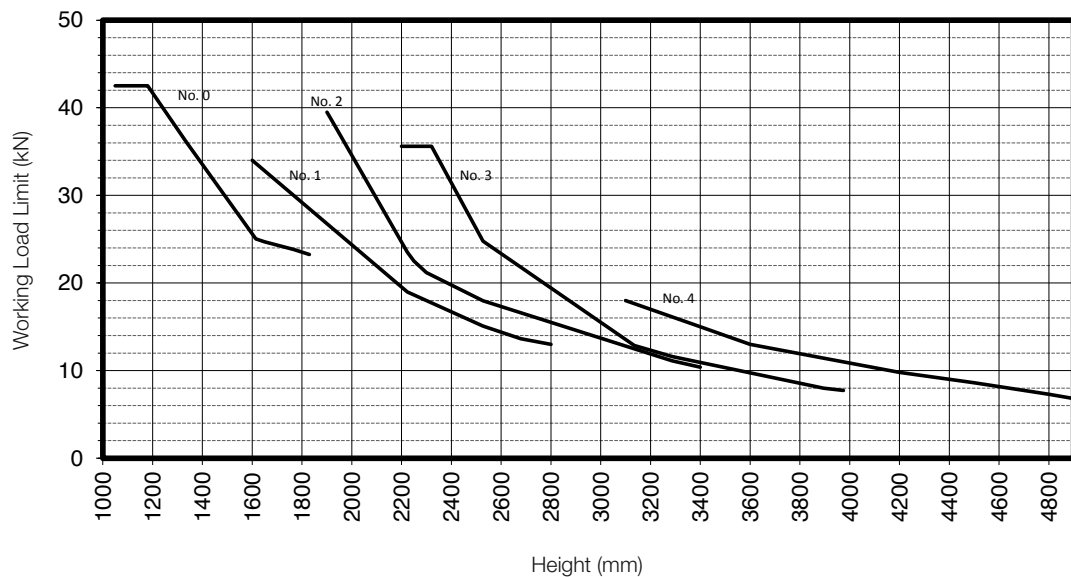
- The thread on the outer-tube provides fine adjustment within the props given range. The rolled thread retains the wall thickness of the tube and thereby maintains maximum strength.

### Acrow Prop Nut:

- The self-cleaning ACROW PROP nut has a hole at one end for easy turning when the prop handle is close to walls. An extra nut can be added to convert the prop to a push-pull strut.

ACROW PROP RANGE			
SIZE	CLOSED HEIGHT (mm)	OPEN HEIGHT (mm)	EST. WEIGHT (kg)
No.0	1050	1830	13.0
No.1	1600	2800	17.3
No.2	1900	3400	20.0
No.3	2170	3975	22.6
No.4	3100	4900	30.0

## COMPRESSION WORKING LOAD LIMITS TO AS3610-95



1. Working load limits are applicable to Acrow Props made from Galtube Plus or hot dipped galvanised tubes only.
2. Limit state conversion factor = 1.5
3. Refer to AS3610 for acceptable criteria for installation of props and eccentricity of loading. Load eccentricity must not exceed 25mm.
4. For concentric loading and Acrow painted Props please refer to Acrow Engineering.